

OA1000 Pro Series

High-Performance Fingerprint & RFID Terminal



OA1000 Mercury Pro

OA1000 Pro



Linux



Dual-core
1.0GHz CPU



Cloud
Management



Realtime
Snapshot



WiFi
(Optional)



3G
(Optional)

As a flagship series of Anviz high level fingerprint access control, OA1000 Pro series meet various integration requirements with Dual Core 1.0GHz CPU and inbuilt cloud software. Based on Linux platform, integrated with third party modules like HID iClass RFID module, live scan Lumidigm sensor, and 360°identification U.are.U sensor. OA1000 Pro series is the most favorite choice for professional security system integrators.



Model Line

Mode	OA1000 Pro	OA1000 Mercury Pro (Live Identification)	
Sensor	AFOS	Lumidigm	
Algorithm	Anviz BioNANO	Lumidigm	Anviz BioNANO (Optional)
User Capacity	10,000	1,000	10,000
Fingerprint Template Capacity	10,000	1,000 30,000(1:1)	10,000
Scan Area(W * H)	18mm * 22mm	13.9mm * 17.4mm	
Dimensions(W * H * D)	180 * 137 * 40mm	180 * 137 * 50mm	

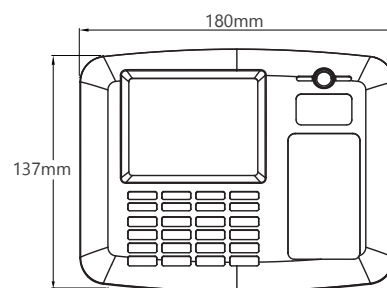
Specification

Item	Description
Processor	Dual Core 1.0GHZ High Speed Processor
Memory	8G Flash Memory & 1G SDRAM
Resolution	500 DPI
FRR	0.001%
FAR	0.00001%
LCD	3.5 Inch TFT Display
Camera	0.3 Million Pixel Camera
Log Capacity	200,000
User Photo Capacity	500 Support 16G SD card
Support RFID Card	125KHZ EM Option 13.56MHZ Mifare , HID iClass
Identification Mode	FP, Card, ID+FP, ID+PW, PW+Card, FP+Card
Identification Time	1: 10,000 <0.5 Sec
Communication Interface	TCP/IP, RS232, USB Flash Drive Host, Optional WIFI, 3G
Webserver	Built-in Webserver
Built-in Relay	2 Relays Output (Directly Lock control & Alarm output)
I/O	Wiegand In&Out, Switch, Door Bell
Image Display	User Photo & Fingerprint Image
Short Message	200
Scheduled Bell	30 Scheduleds
Self-service Record Inquiry	Yes
Groups & Time Schedules	16 Groups, 32 Time Zones
Certificate	FCC, CE, ROHS
Tamper Alarms	Yes
Operating Voltage	DC 12V
Temperature	-20 C ~ 60 C
Preferred Humidity	10 to 90%
Firmware Update	USB Flash Drive, TCP/IP, Webserver

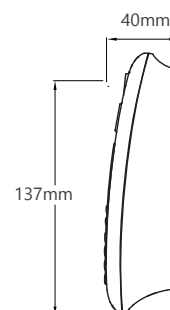
Features

- Dual Core high speed CPU, large memory support 10,000 FP Templates
- Less than 0.5s rapidly verification speed (1:10,000)
- 0.3 Million Camera capture verifier's photo for event backup
- Built-in Webserver for device quick set and records check
- TCP/IP, WIFI, 3G and RS485 multi communication modes
- Dual Relays both for door control and linkage with alarm system
- Provide complete Development Kit to build exclusive application platform(SDK, EDK, SOAP)
- Supports a variety of third-party modules, to meet different project requirement(Mercury, U.ARE.U, HID iClass)

Outline Drawing

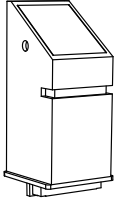


Front view



Side view

Finger Sensor



AFOS

Waterproof
Dust proof
Scratchproof

AFOS

The high quality optical imaging glass results in improved image. Antireflective and wear resistant plate enhances the durability. The fully sealed sensor offers the weather resistance and durability.



Lumidigm
Wet Fingerprint
Dirty Fingerprint
Oil Fingerprint

Lumidigm

The Lumidigm fingerprint sensor adopts multispectral imaging technology is that it virtually eliminates common real world problems experienced by conventional fingerprint sensors.

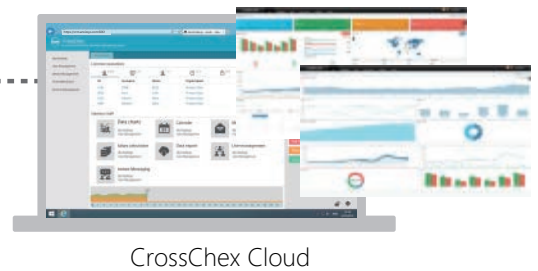
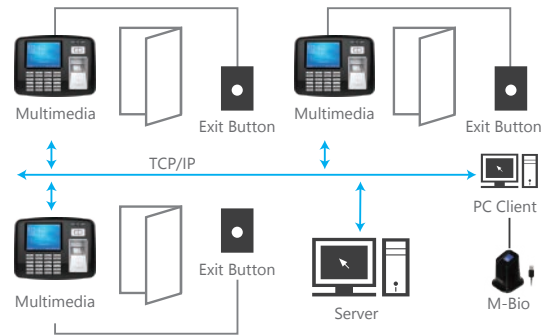


CrossChex Cloud For Global Cloud System

Time Attendance and Access Control Management System

Advantages

- No need to install, maintain, or upgrade software
- No expensive computers to purchase or maintain
- Access data in real-time from any PC and Mobile with Internet
- Receive real-time alerts to your email
- Multiple encryptions and redundancy backup for data safety.



CrossChex Cloud

Multi-Platform



About Anviz

Founded in 2001, Anviz is a global leader in the field of intelligent security including Biometric and RFID. Cutting edge technologies, sophisticate QA system (ISO certified) and worry-free services & support provide our partners with the key of business success.

Anviz dedicates to offer professional and comprehensive security solutions. With the continuously growing demand of public and private security, Anviz announced the surveillance product line which was created based on the innovations of our optical and digital image processing technology.

Combining the high-quality products and cost-effective security solutions, Anviz serves various clients from government, law, retail, industrial, commercial, financial, medical, education, etc.

AGPP Anviz Global Partner Program

AGPP is Anviz Global Partner Program. It is designed for industry-leading distributors, resellers, software developers and system integrators highly qualified in providing intelligent security solutions of Biometric, RFID and Surveillance in targeted vertical markets. The program helps partners build a sustainable business model in a fast-changing environment, where customers require value-added services, focused technical expertise and high levels of satisfaction.



Aggressive
Industry-leading Margins

Priority
Partner Technical Support

Online
Ordering and Private Partner Portal

Partner
Training Provided

Assisted
Marketing Campaign Programs

Preferred
Professional Services

Earned
MDF CO-OP Funds

Customer
Referral and Lead Generation Programs

For more information, visit www.anviz.com, or email us sales@anviz.com.